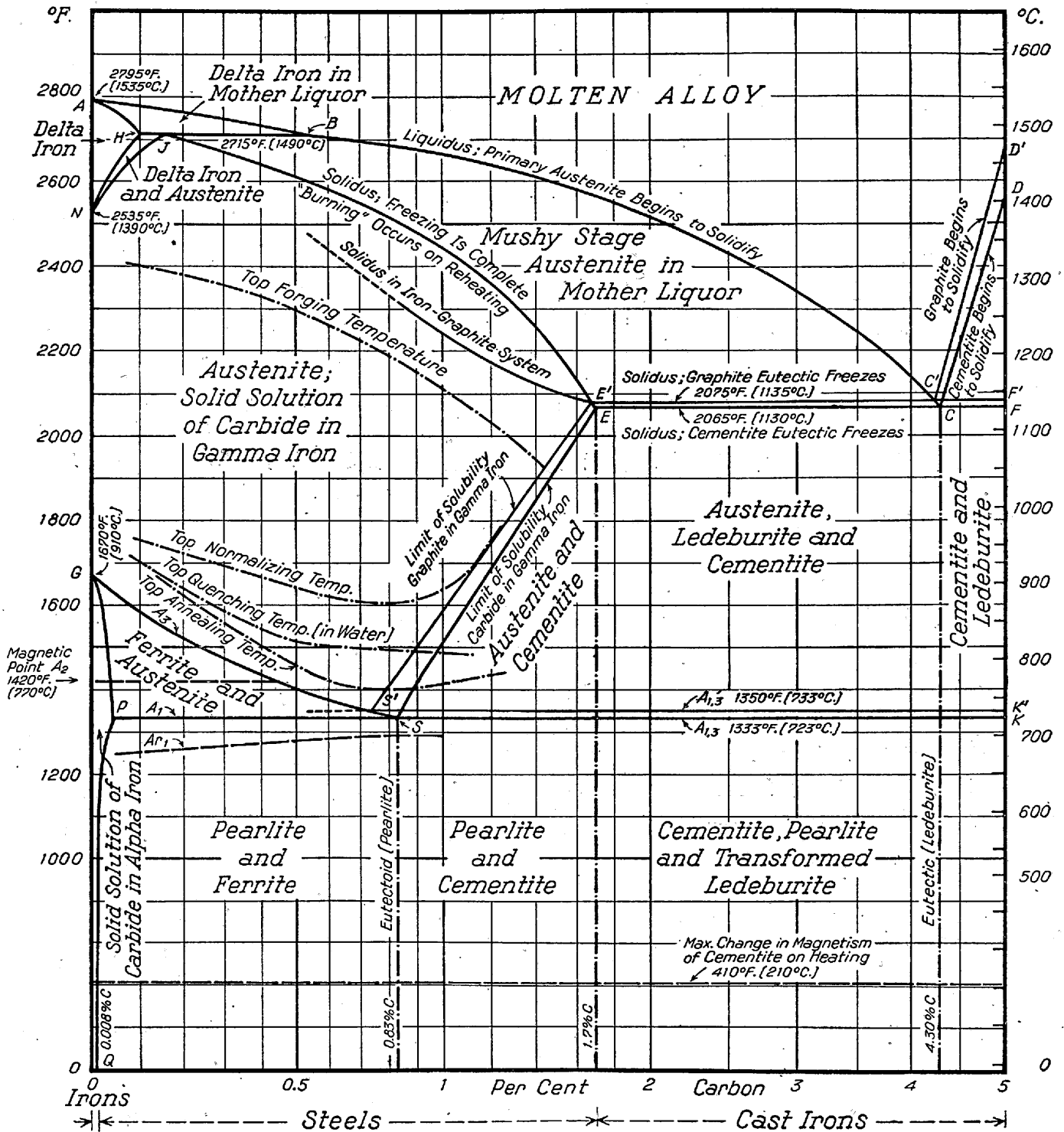


Iron, Iron Carbide Equilibrium Diagram

Approximate Iron-Graphite Diagram in Red



Except as noted hereafter, lines are reproduced by courtesy of The Engineering Foundation from diagrams published in one of the Alloys of Iron Monographs: "Alloys of Iron and Carbon," Vol. I on Constitution, by Samuel Epstein.

Delta iron region and solidus by Frank Adcock, *Journal of the Iron and Steel Institute*, 1937-I.

Forging and heat treating temperatures from Recommended Practices, 1939 Metals Handbook.

Solidus in Iron-Graphite System according to Kaya, Honda and Endo, *Science Reports*, Tohoku Imperial University, 1925 and 1927.

Ar. according to Hoyt and Dowdell, "Metals and Common Alloys," for cooling rates of 1° C. in 3 sec.

Line GPQ according to J. H. Whiteley, *Journal of Iron and Steel Institute*, 1936.

Solidus in graphite system left of E' as suggested by Harry A. Schwartz.