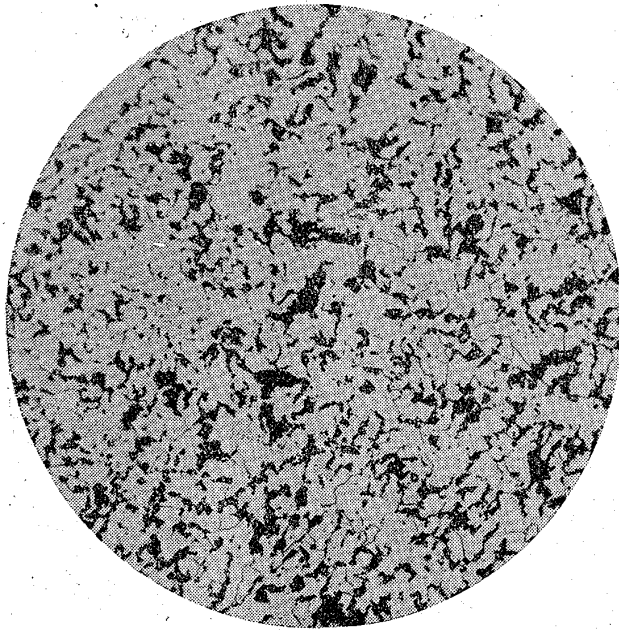
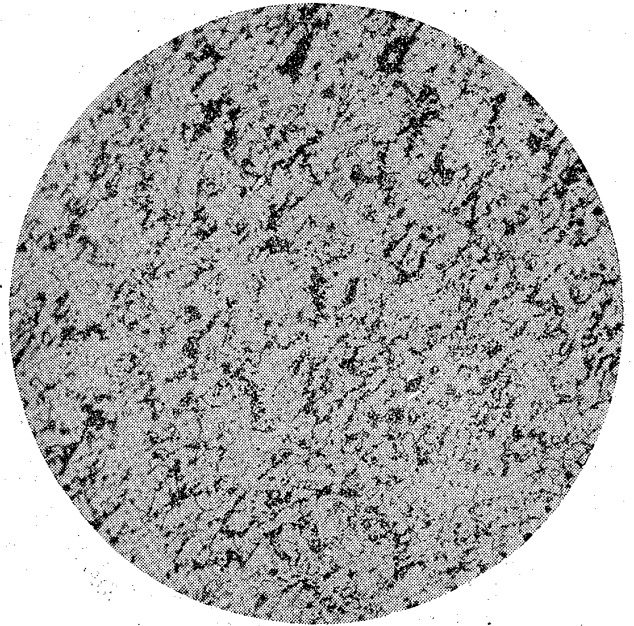


鐵と鋼第十四年第八號 濱住博士外二名 論說中(661—662 頁)の寫眞圖は本圖と御取替へ下さい

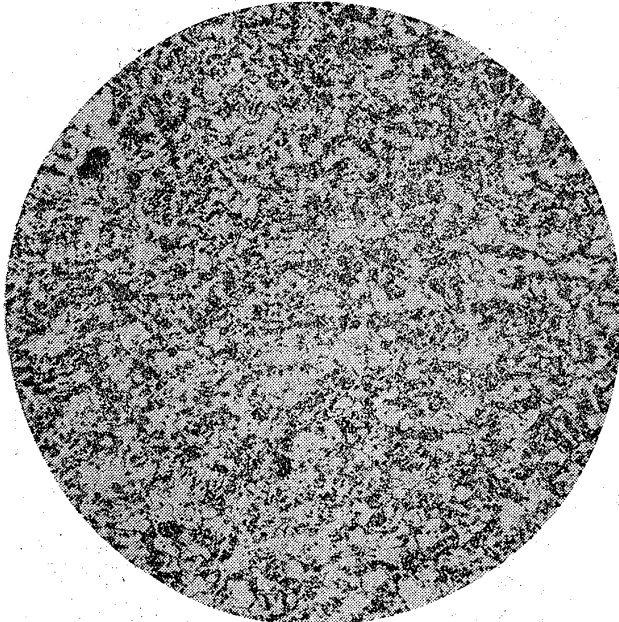
寫眞第 1 圖 C 0.12%; Mn 1.03%  
×150



寫眞第 2 圖 C 0.11; Mn 2.00%  
×150



寫眞第 3 圖 C 0.11; Mn 2.68%  
×400



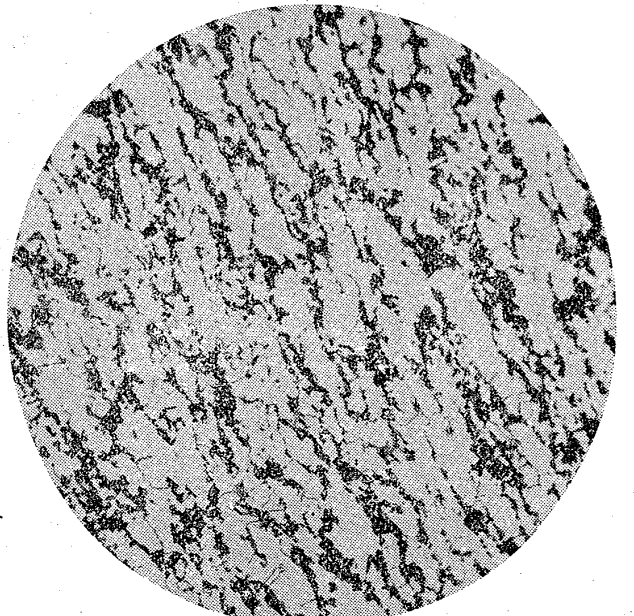
寫眞第 4 圖 C 0.13; Mn 4.13%  
×400



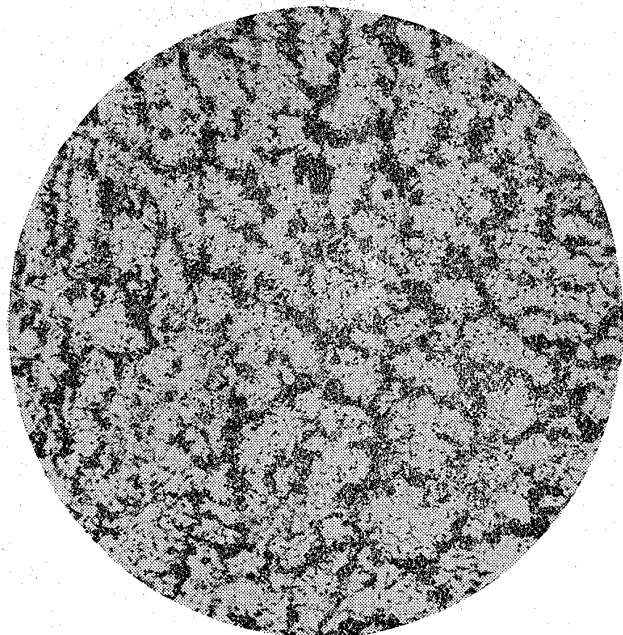
寫眞第 5 圖 C 0.10%; Mn 4.87%  
×400



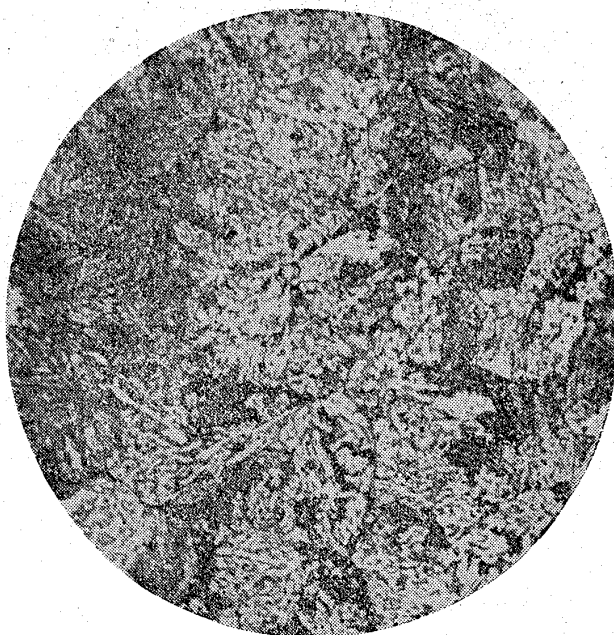
寫眞第 6 圖 C 0.20%; Mn 1.15%  
×150



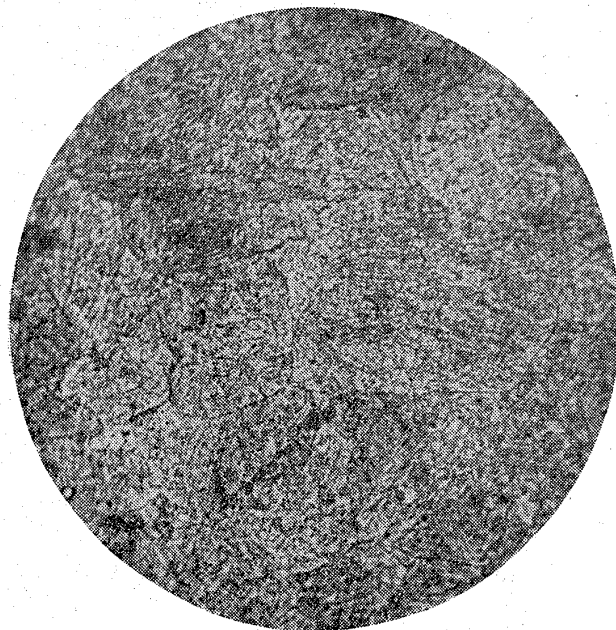
寫真第 7 圖 C 0.22%; Mn 1.85%  
×150



寫真第 8 圖 C 0.26%; Mn 3.62%  
×400



寫真第 9 圖 C 0.25%; Mn 4.15%  
×400



寫真第 10 圖 C 0.26%; Mn 5.11%  
×400

